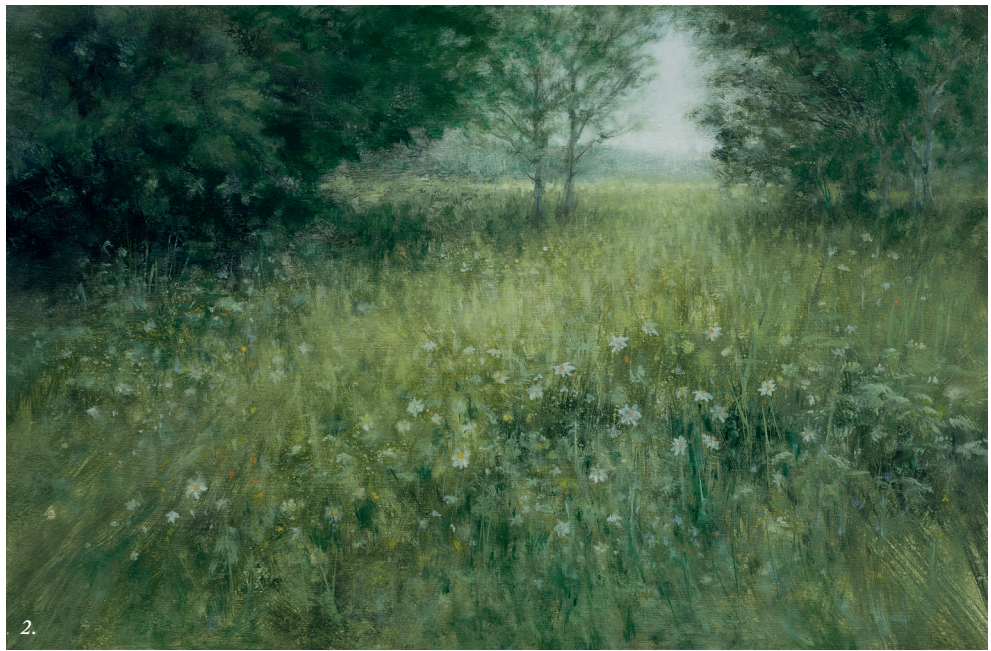


Anew





1. Marie Robinson, 'Soleil D'Or',
oil on canvas, 18x18cm
2. Al Bell, 'Campsie Meadow',
oil on board, 40x60cm
3. Mary McDonald, 'Clyde, Ardmore Point.
Silence is wonderful',
oil on canvas, 61x92cm
4. Michelle Lowe, Bluebell Butter Dome
(Photo by Shannon Tofts)





Anew

**Twenty six artists celebrating 'Anew' in our group Spring Show:
ceramics and paintings, monoprints and etchings.**

15th March – 16th June 2024

Twenty six artists, some exhibited with the WG before and some new, have been asked to launch our Anew into Spring; an abundance of flora and fauna, inspiring landscapes afresh, whimsy figures splashing into water, shafts of light to revive the senses and lead us out of the long Winter into a promising anew mode. Clare Arbuthnott RSW, Kirstie Behrens, Al Bell, Sabrina Campbell, Sarah Carrington, Susan Cook, Hetty Haxworth, Rosie Hay, Jonathan Koetsier, Michelle Lowe, Claire MacLellan, Malize McBride, Mary McDonald, Christian Moore, James Naughton, Ellis O'Connor, Barbara Peirson, Jo Perkins, Greer Ralston, Marie Robinson, Maryann Ryves, Ann Ruddy, Jayne Stokes SSA, Nicola Stratton-Tyler, Olivia Tuck, and Watermill Gallery artist & curator Zanna Wilson.

Cover image: Susan Cook, 'Anew', mixed media on board, 61x51cm

Above image: Sarah Carrington, 'Rain, Portstewart', oil, acrylic and gold leaf on canvas, 76x168cm



1. Nicola Stratton Tyler, 'Geranium Study i', oil on gesso panel, 25x20cm 2. Kirstie Behrens, 'Loch Assynt', etching, 39x96cm
3. Olivia Tuck, 'Herrings', oil on board, 23x30cm 4. Malize McBride, 'Sailing on Loch Linnhe', oil on canvas, 102x102cm
5. Sabrina Campbell, 'Heather Burn', oil on canvas, 40x40cm



Anew

One Private View: with a refreshing difference!

**'Anew' Pisco Sour Private View (our first one) hosted by WG artist Zanna, 15th March 6pm – 9pm;
a private view with Pisco Sour cocktails served and non-alcoholic soft options.**

There will be some live painting going on by Zanna, alongside the pisco sours. Three easels will be set up with three paintings on the go to see how Zanna works intuitively. Hopefully some of the other artists will be in attendance too and it's a chance to meet some of the makers.

The Gallery is then open 7 days a week 10am-5pm and Sundays 11am-4.30pm.

All works are for sale on receipt of this catalogue.

The full exhibition can be viewed online at www.zannawilson.com

Image: *Clare Arbutnott RSW, Hellebores in stripy bowl, oil on canvas, 54x54cm*



1. Zanna Wilson, 'Lime Tree Avenue',
acrylic on board, 122cm x 150cm

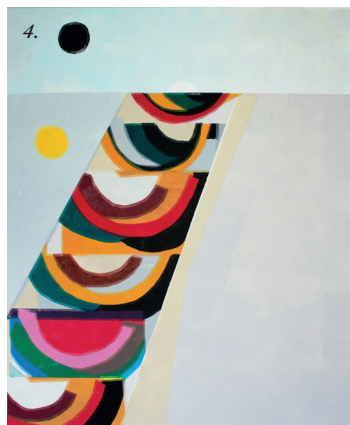
2. James Naughton, 'Cloud break',
oil on board, 29x21cm,

3. Claire MacLellan,
'Seafood on white Table',
mixed media on board, 100x100cm

4. Maryann Ryves 'Harbour Wall',
oil on canvas, 76x76cm

5. Jayne Stokes SSA, 'Schiehallion',
acrylic, collage, metal tin and found objects





1. Jonathan Koetsier, 'Beach on Islay looking towards Paps of Jura', oil on canvas, 71x92cm
2. Ellis O'Connor, 'The lookout', oil on canvas, 100x100cm
3. Greer Ralston, 'Unfurling Tree Peony', oil on canvas, 90x90cm
4. Hetty Haxworth, 'Catching the moonlight', monoprint, 113x95cm



1. Ann Ruddy, 'Bowl of Lemons', oil on board, 15x15cm 2. Jo Perkins 'Glade' 80x60cm stretched canvas
3. Barbara Peirson, 'Catching the Light, Loch Tay', mixed media on wood panel, 35x40cm 4. Rosie Hay, Celadon Handpainted Landscape Design Moonjar, 13.5x16cm
5. Christian Moore, 'duck duck goose', minerals, pigments and aged cold cast bronze on hessian, 50x60cm

Dates for your Diary:

Zanna wishes you all a vibrant bounce into Spring and thanks you for your continued support with the Gallery.

We've a wonderful schedule of shows to get you through 2024 –

'Fashion & Fizz Friday' on 12th April 6-9pm with Bella Hoskyns Clothing (www.bellahoskyns.com),

Zanna's own solo show 'Sojourn' in the Summer, opening 21st June,

the 'Glow' group show launch 27th September

and 'Resplendence' starting 22nd November as the huge Winter and Christmas show.



The Watermill Gallery, Mill Street, Aberfeldy, PH15 2BG

Telephone: Zanna Wilson 07881780103

hello@zannawilson.com www.zannawilson.com @zanna_thewatermillgallery

Monday – Saturday: 10am–5pm, Sunday: 11am – 4.30pm